

Table of Contents

Dedication	iii
Preface	xix

Chapter 1: Introduction to SOLIDWORKS Design 2026

Introduction to SOLIDWORKS Design 2026	1-2
Part Mode	1-2
Assembly Mode	1-3
Drawing Mode	1-3
System Requirements	1-4
Getting Started with SOLIDWORKS Design	1-4
Menu Bar and SOLIDWORKS Design Menus	1-7
CommandManager	1-8
Part Mode CommandManagers	1-8
Assembly Mode CommandManagers	1-10
Drawing Mode CommandManagers	1-10
Customized CommandManager	1-11
Toolbar	1-12
Pop-up Toolbar	1-12
View (Heads-Up) Toolbar	1-12
Shortcut Bar	1-13
Mouse Gestures	1-13
Dimensioning Standards and Units	1-14
Important Terms and their Definitions	1-14
Feature-based Modeling	1-14
Parametric Modeling	1-14
Bidirectional Associativity	1-15
Windows Functionality	1-16
SWIFT Technology	1-16
Geometric Relations	1-16
Blocks	1-18
Library Feature	1-18
Design Table	1-18
Equations	1-19
Collision Detection	1-19
What's Wrong Functionality	1-19
SimulationXpress	1-19
Physical Dynamics	1-19
Physical Simulation	1-20
Seed Feature	1-20
FeatureManager Design Tree	1-20
Absorbed Features	1-20
Child Features	1-20
Dependent Features	1-20

Auto-Backup Option	1-20
Selecting Hidden Entities	1-21
Hot Keys	1-21
Color Scheme	1-23
Self-Evaluation Test	1-23
Review Questions	1-24

Chapter 2: Sketching, Dimensioning, and Creating Base Features and Drawings

The Sketching Environment	2-2
Starting a New Session of SOLIDWORKS Design 2026	2-3
Task Panes	2-3
SOLIDWORKS Resources Task Pane	2-3
Design Library Task Pane	2-5
File Explorer Task Pane	2-5
View Palette Task Pane	2-5
Appearances, Scenes, and Decals Task Pane	2-5
Custom Properties Task Pane	2-6
SOLIDWORKS User Forum Task Pane	2-6
Starting a New Document in SOLIDWORKS Design 2026	2-6
Part	2-7
Assembly	2-7
Drawing	2-7
Understanding the Sketching Environment	2-8
Setting the Document Options	2-10
Modifying the Drafting Standards	2-10
Modifying the Linear and Angular Units	2-11
Modifying the Snap and Grid Settings	2-12
Learning Sketcher Terms	2-13
Origin	2-13
Inferencing Lines	2-13
Select Tool	2-14
Invert Selection Tool	2-15
Drawing Lines	2-16
Orientation Rollout	2-16
Options Rollout	2-17
Drawing Continuous Lines	2-17
Drawing Individual Lines	2-18
Line Cursor Parameters	2-19
Drawing Tangent or Normal Arcs Using the Line Tool	2-20
Drawing Construction Lines or Centerlines	2-21
Drawing Midpoint Line	2-21
Drawing the Lines of Infinite Length	2-21
Drawing Circles	2-22
Drawing Circles by Defining their Center Points	2-23
Drawing Circles by Defining Three Points	2-23
Drawing Construction Circles	2-24
Drawing Arcs	2-24

Drawing Tangent/Normal Arcs	2-24
Drawing Centerpoint Arcs	2-26
Drawing 3 Point Arcs	2-27
Drawing Rectangles	2-28
Drawing Rectangles by Specifying their Corners	2-28
Drawing Rectangles by Specifying the Center and a Corner	2-29
Drawing Rectangles at an Angle	2-29
Drawing Centerpoint Rectangles at an Angle	2-30
Drawing Parallelograms	2-30
Drawing Polygons	2-31
Drawing Splines	2-33
Drawing Slots	2-34
Creating a Straight Slot	2-34
Creating a Centerpoint Straight Slot	2-34
Creating a 3 Point Arc Slot	2-35
Creating a Centerpoint Arc Slot	2-35
Placing Sketched Points	2-36
Drawing Ellipses	2-36
Drawing Elliptical Arcs	2-37
Drawing Parabolic Curves	2-38
Drawing Conic Curves	2-39
Drawing Display Tools	2-40
Zoom to Fit	2-40
Zoom to Area	2-40
Zoom In/Out	2-41
Zoom to Selection	2-41
Pan	2-41
Previous View	2-41
Redraw	2-42
Shaded Sketch Contours	2-42
Deleting Sketched Entities	2-42
Applying Geometric Relations to Sketches	2-42
Applying Relations Using the Add Relations PropertyManager	2-42
Dimensioning a Sketch	2-43
Creating Base Features by Extruding Sketches	2-44
Starting a New Drawing Document from the Part Document	2-45
Tutorial 1	2-45
Tutorial 2	2-51
Tutorial 3	2-57
Tutorial 4	2-66
Self-Evaluation Test	2-75
Review Questions	2-76
Exercise 1	2-77
Exercise 2	2-78
Exercise 3	2-78
Exercise 4	2-79

Chapter 3: Editing and Modifying Sketches

Editing Sketched Entities	3-2
Trimming Sketched Entities	3-2
Extending Sketched Entities	3-5
Convert Entities	3-6
Silhouette Entities	3-7
Intersection Curves	3-7
Filleting Sketched Entities	3-8
Chamfering Sketched Entities	3-9
Offsetting Sketched Entities	3-11
Offsetting Edges or Face of a Model	3-12
Mirroring Sketched Entities	3-14
Mirroring Entities Dynamically	3-15
Moving Sketched Entities	3-16
Rotating Sketched Entities	3-17
Scaling Sketched Entities	3-19
Stretching Sketched Entities	3-19
Copying and Pasting Sketched Entities	3-21
Creating Patterns	3-21
Creating Linear Sketch Patterns	3-22
Creating Circular Sketch Patterns	3-25
Editing Patterns	3-27
Writing Text in the Sketching Environment	3-28
Modifying Sketched Entities	3-29
Modifying a Sketched Line	3-29
Modifying a Sketched Circle	3-29
Modifying a Sketched Arc	3-29
Modifying a Sketched Polygon	3-29
Modifying a Spline	3-30
Modifying the Coordinates of a Point	3-32
Modifying an Ellipse or an Elliptical Arc	3-32
Modifying a Parabola	3-32
Dynamically Modifying and Copying Sketched Entities	3-32
Splitting Sketched Entities	3-33
Creating Segments in Sketched Entities	3-33
Tutorial 1	3-34
Tutorial 2	3-41
Tutorial 3	3-49
Self-Evaluation Test	3-56
Review Questions	3-56
Exercise 1	3-57
Exercise 2	3-58
Exercise 3	3-58
Exercise 4	3-59
Exercise 5	3-59
Exercise 6	3-60

Chapter 4: Adding Relations and Dimensions to Sketches

Applying Geometric Relations to Sketches	4-2
Applying Relations Using the Add Relations PropertyManager	4-2
Automatic Relations	4-7
Design Intent	4-8
Dimensioning a Sketch	4-9
Sketch Dimension Previews	4-11
Horizontal/Vertical Dimensioning	4-12
Aligned Dimensioning	4-24
Angular Dimensioning	4-25
Diametric Dimensioning	4-27
Radial Dimensioning	4-27
Linear Diametric Dimensioning	4-28
Ordinate Dimensioning	4-28
Baseline Dimension	4-29
Chain Dimension	4-29
Horizontal Ordinate Dimensioning	4-29
Vertical Ordinate Dimensioning	4-30
Path Length Dimension	4-30
Auto Insert Dimension	4-30
Concept of a Fully Defined Sketch	4-31
Fully Defined	4-31
Overdefined	4-31
Underdefined	4-31
Dangling	4-32
No Solution Found	4-32
Invalid Solution Found	4-32
Sketch Dimension or Relation Status	4-32
Deleting Overdefined Dimensions	4-33
Displaying and Deleting Relations	4-36
Opening an Existing File	4-39
Tutorial 1	4-42
Tutorial 2	4-51
Tutorial 3	4-56
Self-Evaluation Test	4-64
Review Questions	4-65
Exercise 1	4-66
Exercise 2	4-66
Exercise 3	4-67

Chapter 5: Advanced Dimensioning Techniques and Base Feature Options

Advanced Dimensioning Techniques	5-2
Fully Defining the Sketches	5-2
Dimensioning the True Length of an Arc	5-4
Measuring Distances and Viewing Section Properties	5-5

Measuring Distances	5-5
Determining the Section Properties of Closed Sketches	5-7
Creating Base Features by Extruding Sketches	5-9
Creating Solid Extruded Features	5-9
Creating Thin Extruded Features	5-12
Creating Base Features by Revolving Sketches	5-14
Creating Solid Revolved Features	5-15
Creating Thin Revolved Features	5-16
Determining the Mass Properties of Parts	5-18
Dynamically Rotating the View of a Model	5-19
Rotating the View Freely in 3D Space	5-19
Rotating the View around a Selected Vertex, Edge, or Face	5-19
Modifying the View Orientation	5-20
Changing the Orientation Using the Reference Triad	5-22
Restoring the Previous View	5-22
Displaying the Drawing Area in Viewports	5-22
Displaying the Drawing Area in Two Horizontal Viewports	5-23
Displaying the Drawing Area in Two Vertical Viewports	5-23
Displaying the Drawing Area in Four Viewports	5-24
Display Modes of a Model	5-24
Wireframe	5-24
Hidden Lines Visible	5-25
Hidden Lines Removed	5-25
Shaded With Edges	5-25
Shaded	5-25
Additional Display Modes	5-25
Shadows in Shaded Mode	5-25
Perspective	5-26
Assigning Materials and Textures to Models	5-26
Assigning Materials to a Model	5-27
Changing the Appearance of the Model	5-27
Editing the Appearances	5-29
Tutorial 1	5-30
Tutorial 2	5-35
Tutorial 3	5-40
Self-Evaluation Test	5-45
Review Questions	5-46
Exercise 1	5-47
Exercise 2	5-48
Exercise 3	5-48

Chapter 6: Creating Reference Geometries

Importance of Sketching Planes	6-2
Creating Reference Geometry	6-2
Reference Planes	6-3
Creating New Planes	6-4
Creating Reference Axis	6-10

Creating Reference Points	Enhanced	6-13
Creating Reference Coordinate Systems		6-16
Creating Center of Mass		6-17
Creating a Bounding Box	Enhanced	6-17
Advanced Boss/Base Options		6-18
Modeling Using the Contour Selection Method		6-26
Creating Cut Features		6-29
Creating Extruded Cuts		6-30
Creating Multiple Bodies in the Cut Feature		6-33
Creating Revolved Cuts		6-35
Concept of the Feature Scope		6-36
Tutorial 1		6-36
Tutorial 2		6-40
Tutorial 3		6-45
Self-Evaluation Test		6-51
Review Questions		6-52
Exercise 1		6-53
Exercise 2		6-55
Exercise 3		6-56

Chapter 7: Advanced Modeling Tools-I

Advanced Modeling Tools	7-2
Creating Simple Holes	7-2
Creating Standard Holes Using the Hole Wizard	7-3
Creating Advanced Holes	7-9
Creating Threads	7-12
Adding External Cosmetic Threads	7-15
Creating Fillets	7-16
Selection Options	7-32
Creating Fillets Using the FilletXpert	7-34
Creating Chamfers	7-36
Creating Shell Features	7-42
Creating Wrap Features	7-45
Tutorial 1	7-47
Tutorial 2	7-54
Self-Evaluation Test	7-62
Review Questions	7-63
Exercise 1	7-64
Exercise 2	7-65
Exercise 3	7-67

Chapter 8: Advanced Modeling Tools-II

Advanced Modeling Tools	8-2
Creating Mirror Features	8-2
Creating Linear Pattern Features	8-6
Creating Circular Pattern Features	8-12

Creating Sketch Driven Patterns	8-14
Creating Curve Driven Patterns	8-16
Creating Table Driven Patterns	8-18
Creating Fill Patterns	8-20
Creating Variable Patterns	8-24
Creating Rib Features	8-25
Displaying the Section View of a Model	8-30
Changing the Display States	8-33
Tutorial 1	8-35
Tutorial 2	8-42
Tutorial 3	8-46
Self-Evaluation Test	8-56
Review Questions	8-57
Exercise 1	8-58
Exercise 2	8-59
Exercise 3	8-60
Exercise 4	8-61

Chapter 9: Editing Features

Editing the Features of a Model	9-2
Editing Using the Edit Feature Tool	9-2
Editing Sketches of the Sketch-based Features	9-3
Editing the Sketch Plane Using the Edit Sketch Plane Tool	9-3
Editing Using the Instant3D Tool	9-4
Editing Features and Sketches by Using the Cut, Copy, and Paste Options	9-7
Cutting, Copying, and Pasting Features and Sketches from One Document to Another	9-8
Copying Features using Drag and Drop	9-8
Deleting Features	9-9
Deleting Bodies	9-10
Suppressing Features	9-10
Unsuppressing the Suppressed Features	9-11
Unsuppressing Features with Dependents	9-11
Hiding Bodies	9-11
Moving and Copying Bodies	9-12
Reordering the Features	9-14
Rolling Back the Feature	9-15
Renaming Features	9-16
Creating Folders in the FeatureManager Design Tree	9-16
What's Wrong Functionality	9-16
Tutorial 1	9-18
Tutorial 2	9-25
Self-Evaluation Test	9-31
Review Questions	9-32
Exercise 1	9-33
Exercise 2	9-34

Chapter 10: Advanced Modeling Tools-III

Advanced Modeling Tools	10-2
Creating Sweep Features	10-2
Creating Cut-Sweep Features	10-12
Creating Loft Features	10-13
Adding a Section to a Loft Feature	10-21
Creating Lofted Cuts	10-23
Creating 3D Sketches	10-23
Creating Grid Systems	10-25
Mirroring Sketch Entities in a 3D Sketch	10-27
Editing 3D Sketches	10-27
Creating Curves	10-27
Creating a Curve Through XYZ Points	10-33
Extruding a 3D Sketch	10-38
Creating Draft Features	10-39
Creating Dome Features	10-43
Creating Indents	10-46
Creating Deform Features	10-49
Creating Flex Features	10-53
Creating Fastening Features	10-57
Creating the Mounting Boss	10-57
Creating Snap Hooks	10-60
Tutorial 1	10-63
Tutorial 2	10-65
Self-Evaluation Test	10-70
Review Questions	10-70
Exercise 1	10-72
Exercise 2	10-73

Chapter 11: Assembly Modeling-I

Assembly Modeling	11-2
Types of Assembly Design Approach	11-2
Creating Bottom-up Assemblies	11-3
Placing Components in the Assembly Document	11-3
Assembling Components	11-8
Creating Top-down Assemblies	11-28
Creating Components in the Top-down Assembly	11-28
Moving Individual Components	11-29
Moving Individual Components by Dragging	11-29
Moving Individual Components Using the Move Component Tool	11-29
Rotating Individual Components	11-30
Rotating Individual Components by Dragging	11-30
Rotating Individual Components Using the Rotate Component Tool	11-31
Moving and Rotating Individual Components Using the Triad	11-31
Assembly Visualization	11-33

Tutorial 1	11-34
Tutorial 2	11-48
Self-Evaluation Test	11-54
Review Questions	11-55
Exercise 1	11-56
Exercise 2	11-64

Chapter 12: Assembly Modeling-II

Advanced Assembly Mates	12-2
Applying the Profile Center Mate	12-2
Applying the Symmetric Mate	12-3
Applying the Width Mate	12-3
Applying the Path Mate	12-4
Applying the Distance Mate	12-6
Applying the Angle Mate	12-6
Applying the Linear/Linear Coupler Mate	12-6
Mechanical Mates	12-6
Applying the Cam Mate	12-6
Applying the Slot Mate	12-7
Applying the Hinge Mate	12-8
Applying the Gear Mate	12-9
Applying the Rack Pinion Mate	12-10
Applying the Screw Mate	12-10
Applying the Universal Joint Mate	12-11
Creating Sub-assemblies	12-11
Bottom-up Sub-assembly Design Approach	12-11
Top-down Sub-assembly Design Approach	12-11
Inserting a New Sub-assembly	12-12
Deleting Components and Sub-assemblies	12-12
Editing Assembly Mates	12-13
Replacing Mated Entities	12-13
Editing Components	12-14
Editing Sub-assemblies	12-15
Dissolving Sub-assemblies	12-16
Replacing Components	12-16
Creating Patterns of Components in an Assembly	12-18
Pattern Driven Component Pattern	12-18
Local Pattern	12-20
Copying and Mirroring Components	12-21
Copying a Component along with Mates	12-23
Copying Multiple Components	12-24
Magnetic Mates	12-24
Simplifying Assemblies Using the Visibility Options	12-27
Hiding Components	12-27
Hiding Faces Temporarily	12-27
Suppressing and Unsuppressing the Components	12-28
Changing the Transparency Conditions	12-28

Changing the Display States	12-28
Checking Interferences in an Assembly	12-28
Checking the Hole Alignment	12-30
Creating Assemblies for Mechanism	12-31
Analyzing Collisions Using the Collision Detection Tool	12-32
Creating Exploded State of an Assembly	12-34
Regular step (translate and rotate)	12-34
Radial step	12-36
Creating the Explode Line Sketch	12-36
Creating Smart Explode Lines	12-38
Tutorial 1	12-39
Tutorial 2	12-52
Self-Evaluation Test	12-56
Review Questions	12-57
Exercise 1	12-58

Chapter 13: Working with Drawing Views-I

The Drawing Mode	13-2
Starting a Drawing Document	13-2
Types of Views	13-5
Model View	13-5
Projected View	13-5
Section View	13-6
Aligned Section View	13-6
Removed Section View	13-6
Auxiliary View	13-6
Detail View	13-6
Break View	13-6
Broken-out Section View	13-6
Crop View	13-6
Alternate Position View	13-7
Generating Standard Drawing Views	13-7
Generating Model Views	13-7
Using the View Palette to Place the Drawing Views	13-9
Generating the Three Standard Views	13-10
Generating Standard Views Using the Relative View Tool	13-12
Generating Standard Views Using the Predefined View Tool	13-14
Generating Derived Views	13-15
Generating Projected Views	13-16
Generating Section Views	13-17
Generating Broken-out Section Views	13-26
Generating Removed Section Views	13-28
Generating Auxiliary Views	13-29
Generating Detail Views	13-31
Generating Crop Views	13-33
Generating Broken Views	13-34
Generating Alternate Position Views	13-36

Generating Drawing Views of the Exploded State of an Assembly	13-37
Working with Interactive Drafting in SOLIDWORKS	13-38
Editing and Modifying Drawing Views	13-39
Changing the View Orientation	13-39
Changing the Scale of Drawing Views	13-39
Deleting Drawing Views	13-39
Rotating Drawing Views	13-39
Manipulating the Drawing Views	13-40
Modifying the Hatch Pattern in Section Views	13-40
Properties Rollout	13-40
Layer Rollout	13-41
Options Rollout	13-41
Tutorial 1	13-42
Tutorial 2	13-47
Self-Evaluation Test	13-52
Review Questions	13-53
Exercise 1	13-54

Chapter 14: Working with Drawing Views-II

Adding Annotations to Drawing Views	14-2
Generating Annotations Using the Model Items Tool	14-2
Adding Reference Annotations	14-4
Aligning the Dimensions	14-19
Editing Annotations	14-19
Adding the Bill of Materials (BOM) to a Drawing	14-20
Table Template Rollout	14-20
Table Position Rollout	14-20
BOM Type Rollout	14-20
Configurations Rollout	14-21
Part Configuration Grouping Rollout	14-22
Keep Missing Item/Row Rollout	14-22
Item Numbers Rollout	14-22
Border Rollout	14-23
Setting Anchor Point for the BOM	14-23
Linking Bill of Materials	14-23
Adding Balloons to the Drawing Views	14-24
Adding Balloons Using the AutoBalloon Tool	14-25
Creating Magnetic Lines	14-26
Adding New Sheets to the Drawing Document	14-27
Editing the Sheet Format	14-28
Creating User-Defined Sheet Formats	14-28
Tutorial 1	14-29
Tutorial 2	14-35
Self-Evaluation Test	14-40
Review Questions	14-41
Exercise 1	14-42

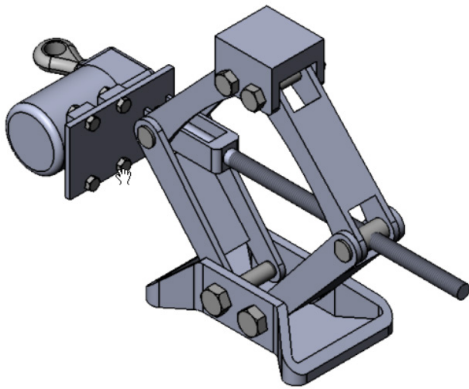
PROJECTS AVAILABLE FOR FREE DOWNLOAD

In this textbook, four projects are available for free download. You can download these projects from our website www.cadcim.com.

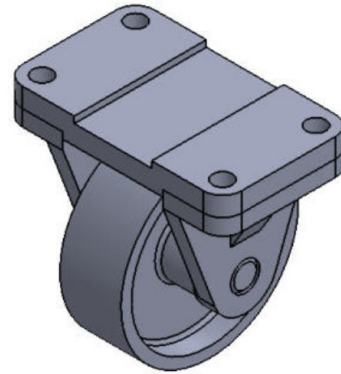
To download these projects, follow the path: *Textbooks > CAD/CAM > SOLIDWORKS > SOLIDWORKS 2026 with Videos for Designers, 24th Edition > Projects for Free Download* and then click on the name of the project that you want to download.

Note

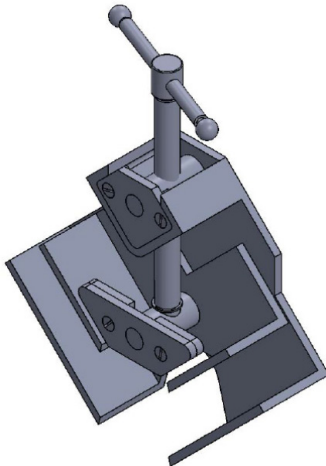
For additional projects, visit www.cadcim.com and follow the path: *Textbooks > CAD/CAM > Parametric Solid Modeling Projects > Parametric Solid Modeling Projects*



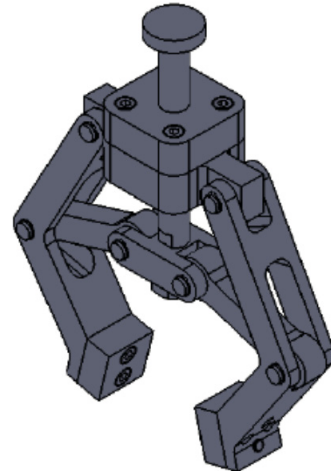
Project 1: Car Jack Assembly



Project 2: Wheel Assembly



Project 3: Angle Clamp Assembly



Project 4: Pneumatic Gripper Assembly

SOLIDWORKS Certification Exam**For Free Download**

Tutorial 1	SCE-2
Tutorial 2	SCE-8
Tutorial 3	SCE-14
Exercise 1	SCE-20
Exercise 2	SCE-21
Index	I-1