

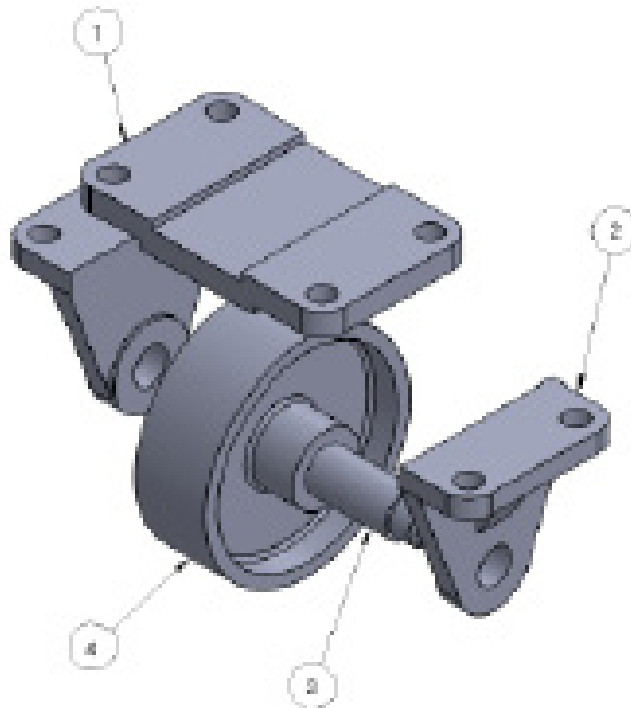
# Project 2

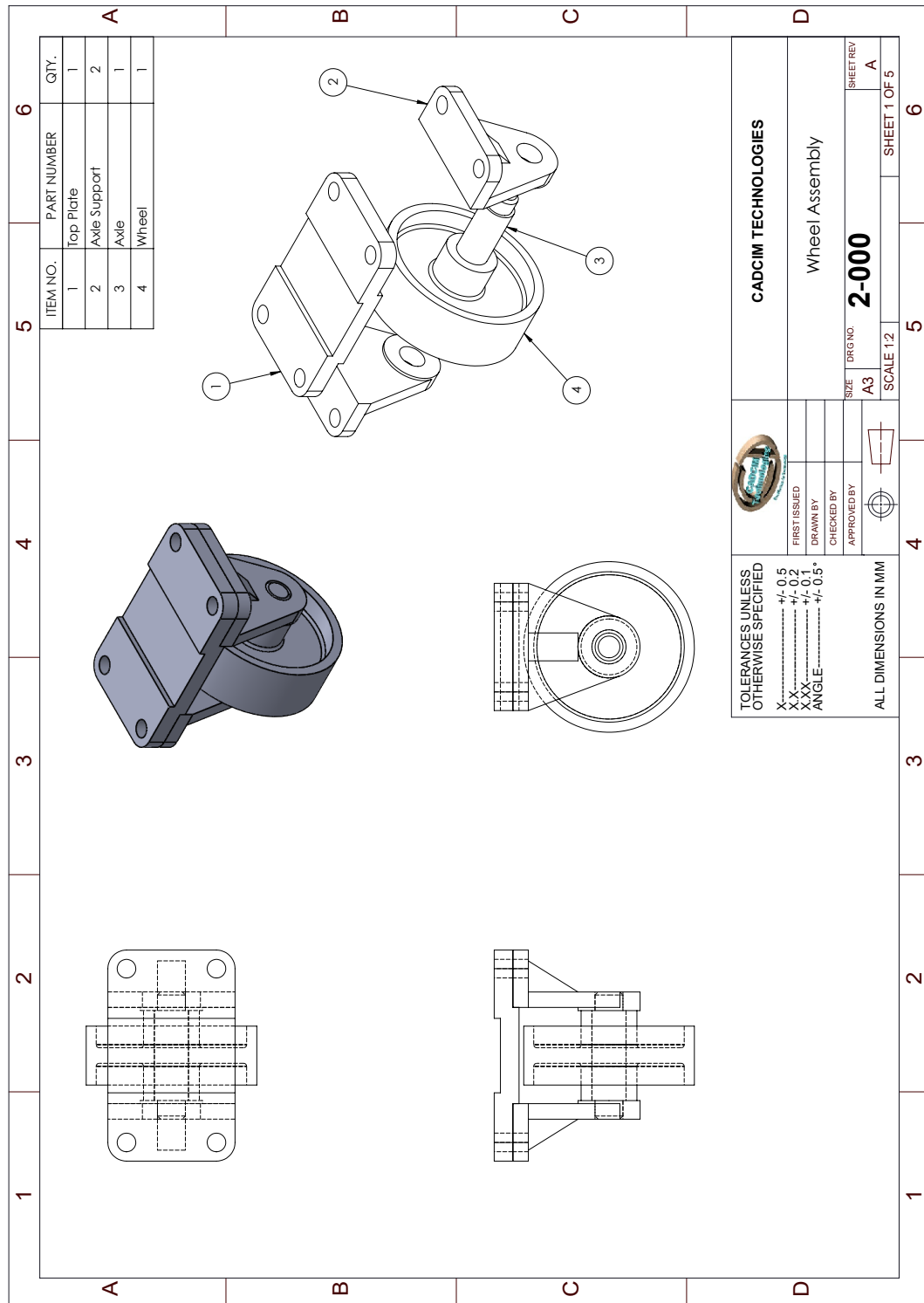
---

## Wheel Assembly

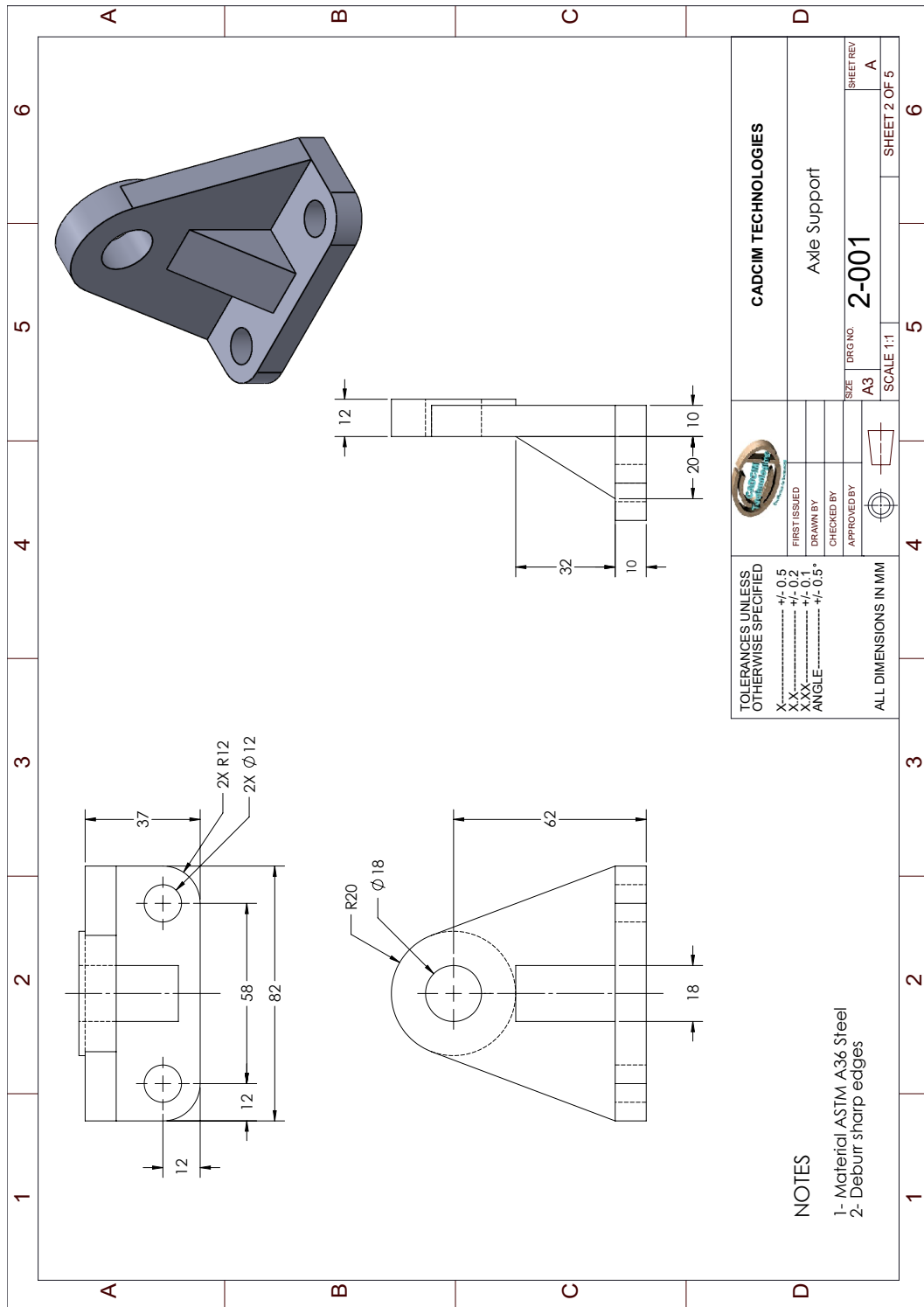
In this project, you will create components for a Wheel assembly and then assemble them. You need to create all the components as separate part files. The views and dimensions of the components are shown in Figures P2-2 through P2-5.

You can also download the model files for your reference from [www.cadcim.com](http://www.cadcim.com). To download the files, use the following path: *Textbooks > CAD/CAM > Solid Edge > Solid Edge 2024 for Designers > Projects for Free Download > Project 2*





**Figure P2-1** *The Wheel assembly*



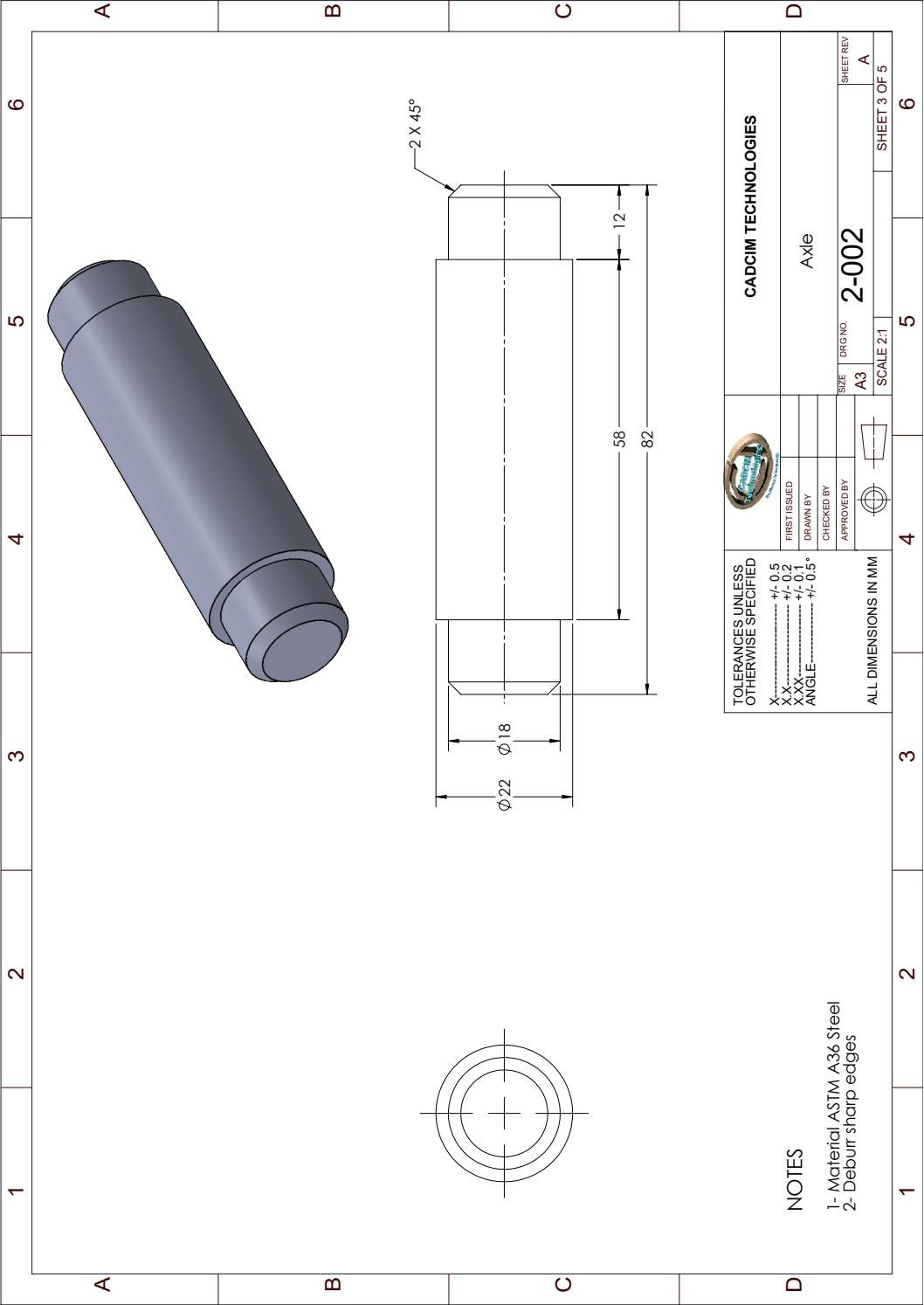


Figure P2-3 Views and dimensions of Axle

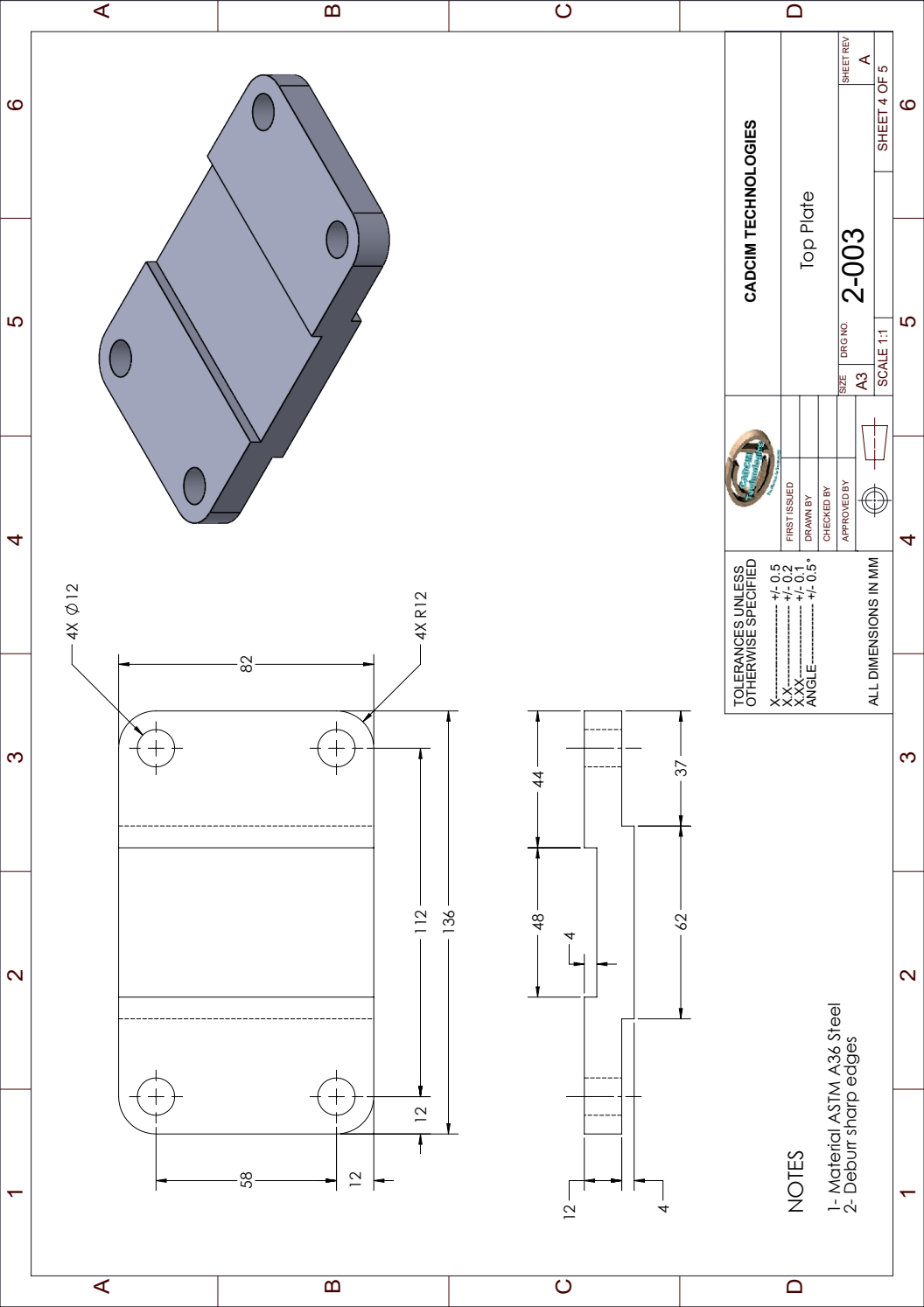


Figure P2-4 Views and dimensions of Top Plate

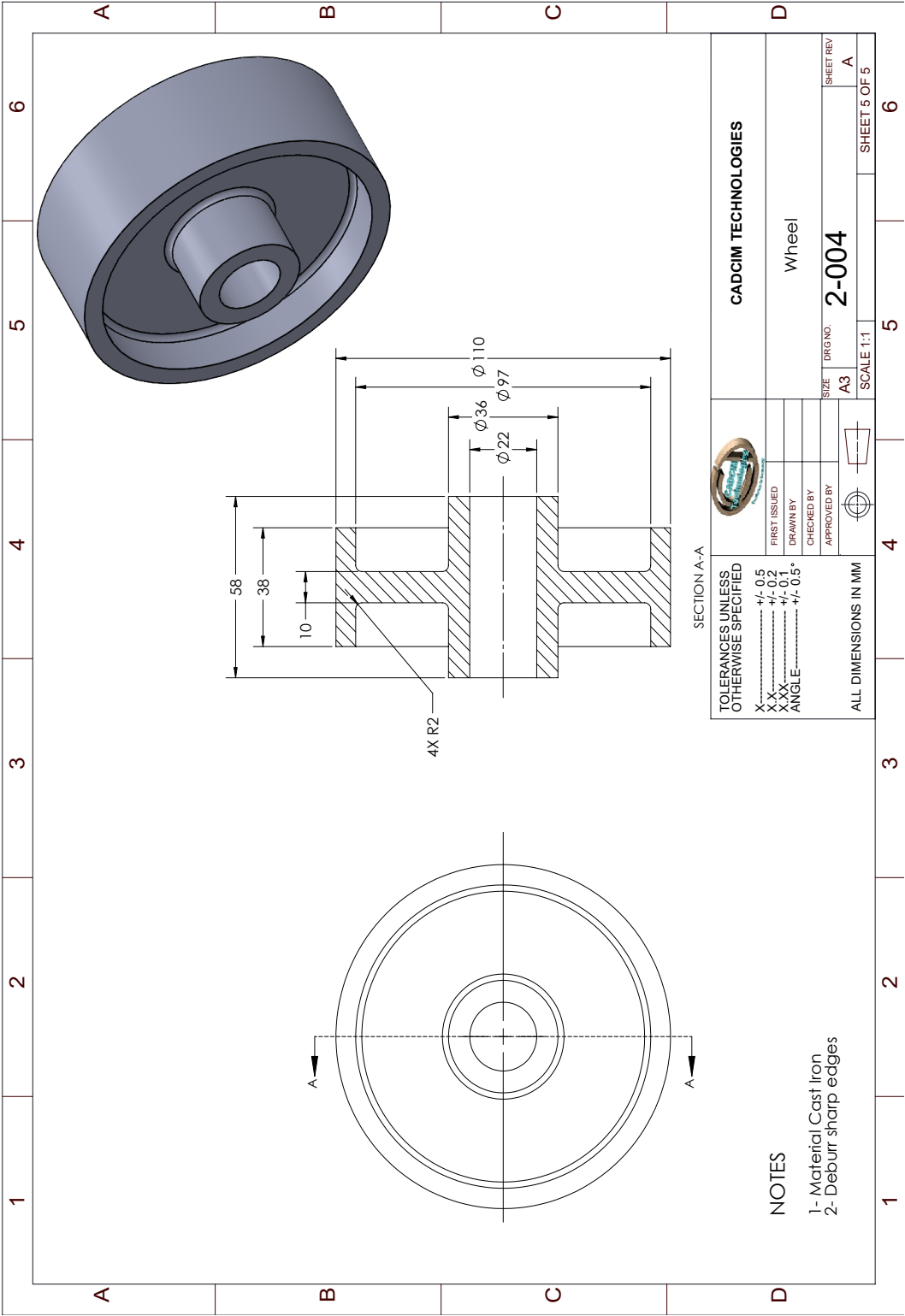


Figure P2-5 Views and dimensions of Wheel